

SIRENA  YACHTS



Go Further, Go Faster.



This new model is the second to be launched after SIRENA 64, which received very positive comments, and achieved great success at 2017 Düsseldorf Yacht Show. She is the smaller of a projected line of five Motor Yachts planned for the near future by SIRENA Yachts.

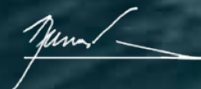
Like her predecessor, SIRENA 58 benefits from the development of its efficient hull underbody, and having the best performance at a wide range of Froude numbers, from displacement mode up to planning condition. She is able to explore all corners of the world, cruising in comfort and safety with low fuel consumption.

The construction is done using resin infusion for best fiber to resin content. The scant links and hull reinforcements have been planned to comply with ISO 12215 requirements.

Aesthetically she shows a very strong purposeful character of an expedition yacht, having full headroom throughout, large uncluttered deck areas, large glass window surfaces and a fly bridge that is larger than the norm.

The volume inside is quite ample for a yacht of her size. The joinery work built of high quality woods and fabrics, offers variety of options regarding its interior layout to maximize the joy of life at the sea according to every individual's needs.

Germán Frers









 **SIRENA 58**

The Journey Continues!

German Frers's groundbreaking hull design success from SIRENA 64 keeps on with her little sister SIRENA 58.

Designed using extensive tank testing to deliver the best performance in her class.











 **SIRENA 58**

Long Voyages!

Thanks to her highly efficient hull shape, SIRENA 58 gives the possibility to undertake lengthily voyages in long lasting comfort.









'The question of what you want is actually the question of how you want to **live your life.'**

Marie Kondo















SIRENA 58















 **SIRENA 58**

Perfect Balance Between
Form And Function.

Advanced engineering doesn't compromise the sleek. The sculptured lines convey her high quality and refined style where enjoyment is not only visual, but also functional.







The image shows the interior of a yacht's galley. On the left, there is a stainless steel double sink with a modern faucet. To the right of the sink is a four-burner gas stove with a black glass cooktop. The cabinetry is a mix of light-colored wood (oak) and a darker wood (wenge). Large windows with white blinds run along the side of the cabin, providing a view of the ocean. The overall design is clean and functional, with a focus on ergonomics and space efficiency.

58' MY INTERIORS

“The SIRENA 58” has a three lower deck layout. All versions guarantee significant interior volumes. The forward master cabin optional layout offers an access to the large foredeck area that is a design solution usually found on much larger yachts.

In the day area, we paid closest attention to ergonomics and use of the available space; which is also evident; where the simple closure of the dining table creates two separate areas - a further guarantee of increased privacy.

Having the galley located near the stern is a perfect design for setting the table in the cockpit thanks to the complete absence of steps - creating a single spacious area for both indoor and outdoor living.

With the huge lateral windows running full length without interruption and another window on the cabin-top, an impressive amount of natural light permeates the interiors, bringing out the best of the contrasting colors of the oak and wengé.

Tommaso Spadolini

DESIGN STUDIO SPADOLINI













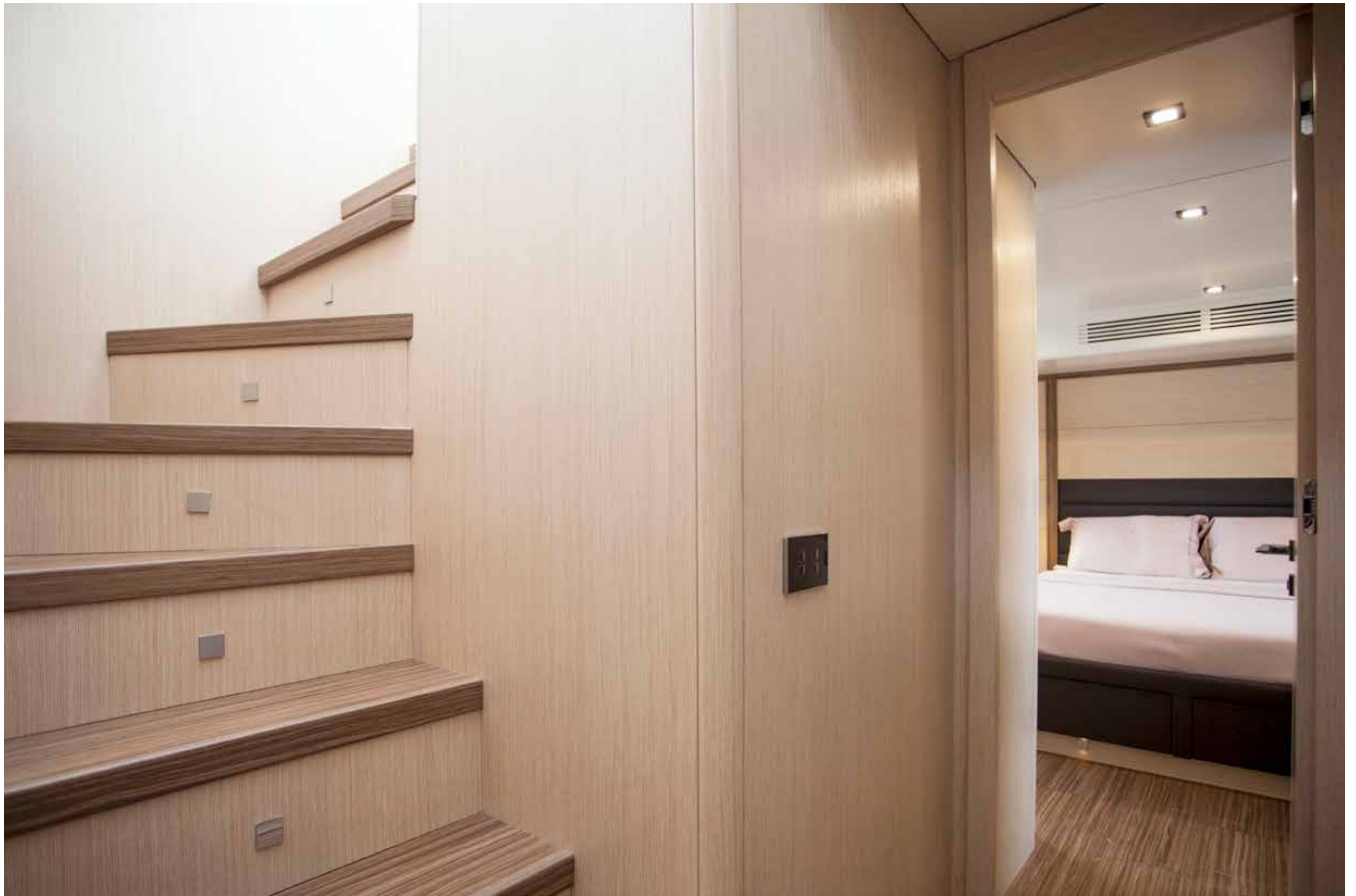














 **SIRENA 58**

Unique **Experience.**

Optional direct access from
foredeck to owner's cabin for
increased privacy and comfort.











Logic will get you from A to B. **Imagination** will take you everywhere.'

Albert Einstein











'The details are not the details, they make the design.'

Charles Eames



SIRENA 58

Hybrid Carbon Superstructure

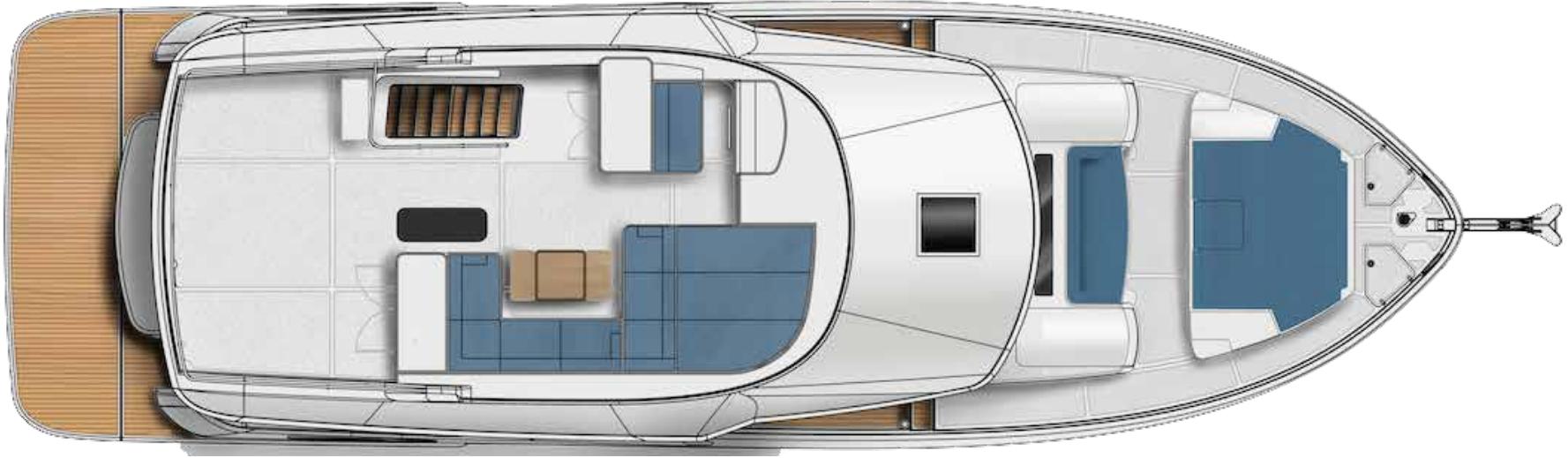
Higher strength and stability
Hybrid carbon superstructure
with lower weight resulting in
increased volumes.



Dimensions and Main Characteristics

Length Overall L_{OA} (Included swim platform exclude anchor roller)	18,58 m	Engines	CAT C 8.7 - 650Hp x 2 CAT C 12.9 - 850Hp x 2 - optional
Hull Length L_H ISO 8666 (Net GRP- Swim Platform Excluded)	17,18 m	Marine Gears	ZF 325 IV (CAT C8.7) ZF 335 IV (CAT C12.9) - optional
Waterline Length L_{WL} ISO 8666 (Full Load Conditions)	17,00 m	Reduction Ratio	2.037: 1 (ZF 325 IV) 1.964: 1 (ZF 335 IV) - optional
Hull Beam B_{Hmax} ISO 8666 (@ Mid-Ship Section)	5,36 m	Transmission	V Drive
Max Draft - T_{MAX} ISO 8666	1,24 m (under propellers)	Propeller Diameter (Max)	800 mm
Loaded Displacement Mass - mLDC ISO 8666	34,5 tonnes (with 2 x CAT C8.7) 36 tonnes (with 2 x CAT C12.9) - optional	Max Speed	27 knots 30 knots
Light Craft Condition Mass - $m_{LCC ISO 8666}$ (= Dry Displacement, No Crew, No Luggage)	28 tonnes (with 2 x CAT C8.7) 29,5 tonnes (with 2 x CAT C12.9) - optional	Cruising Speed	16 knot
Diesel Tank Capacity	3600 l	Economy Cruising Speed	10 knot
Fresh Water Tank	770 l	Range 10 kn (Incl. 10% Reservoir)	850 NM
Black Water Tank Capacity	450 l		
Gray Water Tank Capacity	225 l		
Cabins	3 standard + 1 (optional crew cabin)		
Beds	6 + (1 crew)		
Heads	3 + 1 (crew head)		
Building Material	GRP / Carbon hybrid fiber		
Hull Type	Semi Displacement		
Exterior Styling & Concept	Frers Naval Architecture & Engineering		
Interior Decor	Design Studio Spadolini		
Hull Design	Frers Naval Architecture & Engineering		

Flybridge



Saloon



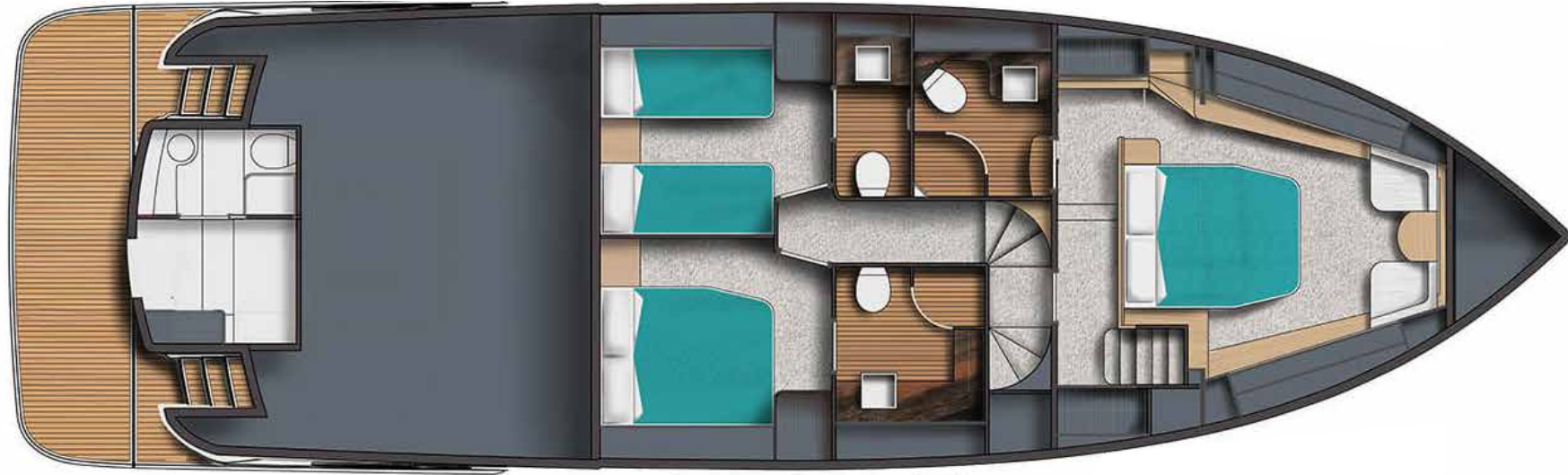
Standard Layout



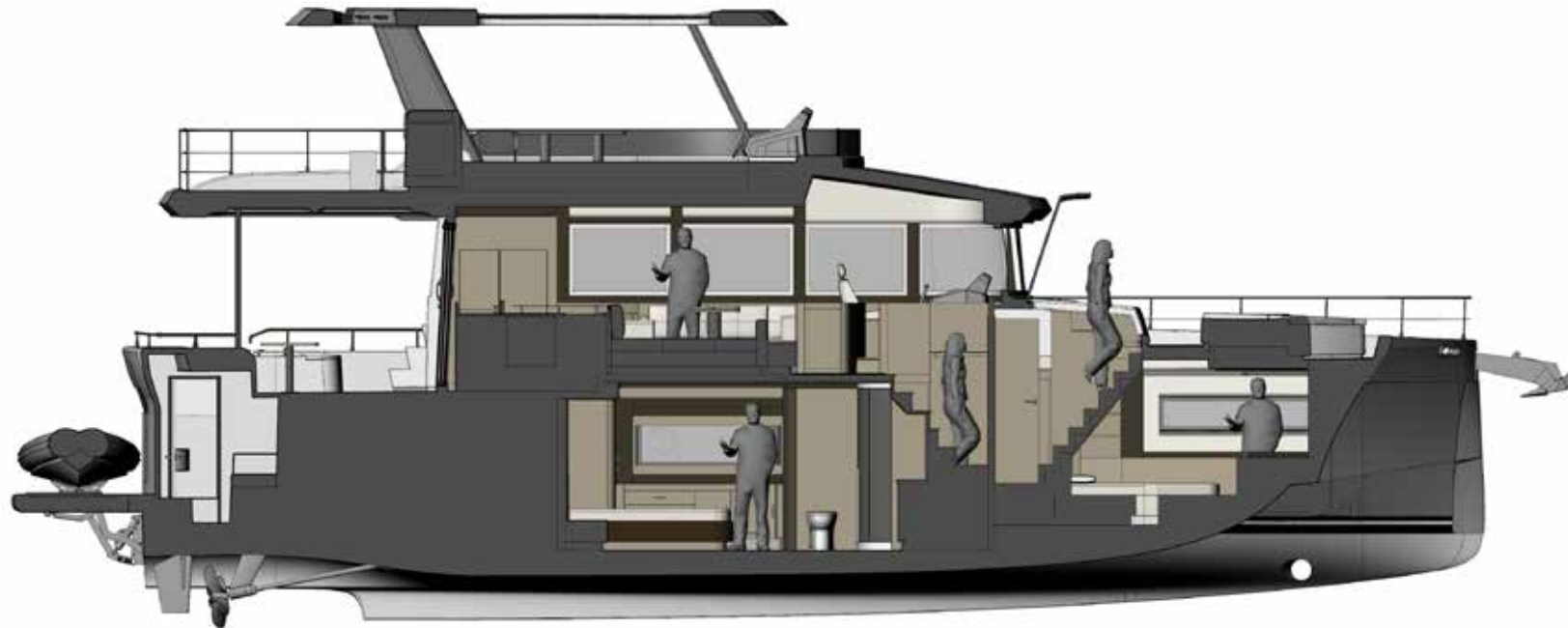
Optional 2 Cabin Layout



Optional 3 Cabin Layout



Optional Layout Side View





ABOUT SIRENA MARINE

Founded in 2006 by Kıraca Holding, Sirena Marine is a prominent manufacturer in both the Yachting and Automotive Industries.

Sirena Marine's vision is to develop internationally-renowned yachting brands by drawing on the talents of world-leading designers like Germán Frers, Rob Humphreys, Tommaso Spadolini and Giovanni Ceccarelli and combining their skills with its own hard-won manufacturing expertise and considerable engineering knowhow. This approach has already borne fruit in Sirena's award-winning AZUREE Sailing Brand, the outstanding EUPHORIA Luxury Sailing Series and Company's brand-new SIRENA Motor Yachts. Having discovered that its expertise can successfully be applied beyond the yachting sphere, Sirena recently expanded into producing composite and stainless components for the rail, automotive, defense and heavy equipment sectors. The company's passionate commitment to quality and worldwide brand development has attracted clients from all over the globe, from Europe to the US, Australia and to China.

FULL CONTROL MANUFACTURING

State-of-the-art technology meets unparalleled handcrafting capabilities. All Sirena Marine product lines are manufactured in the company's own facility, where over 550 employees – including 80 engineers – work in a 155,000 square meters of area. By keeping key-manufacturing activities, such as stainless steel, furniture, teak and upholstery as well as all composite parts in-house, the company is keeping on to build its own experience and skills that led Sirena Marine become one of the leading Yacht Manufacturers in the Mediterranean region.

All Sirena Yachts' hulls and decks are built using the vacuum infusion method, allowing Sirena Marine to combine today's top technology with consolidated yachting craftsmanship principles. Tools and processes are co-engineered with worldwide suppliers, where 400 years of handcrafting experience and passion in yacht building guarantee meticulous execution and detailing.

This Brochure does not, under any circumstances whatsoever, constitute any offer by the Shipyard to any person nor may it be incorporated into any contract. Any and all information contained in this Brochure, including, without limitation, all technical data, performance figures, illustrations and drawings, are just a rough guide only. The contents are in no way contractual and refer to standard models of sailing yachts built by the Shipyard and have been updated by the Shipyard as of the date of issue of the Brochure. Therefore, the only indications binding on the seller are contained solely in the sale agreement and in the relevant specific manual. This Brochure is based on information available at the date of issue. Notwithstanding all efforts to ensure accuracy, the information contained in the Brochure may not cover all details, technical-commercial changes subsequent to the date of issue, nor accurately foresee or report all possible scenarios. Displays, photos, schemes, designs or examples contained in this brochure are solely and exclusively reproduced to highlight the information contained. Due to the different characteristics of each yacht, the Shipyard declines any and all liability for any use thereof on the basis of the information contained in this Brochure.



www.sirenayachts.com

[facebook.com / SirenaYachts](https://facebook.com/SirenaYachts) [instagram.com / sirenayachts](https://instagram.com/sirenayachts)

Abdi İpekçi Cad. Ada Apt. No: 22/18 K:5 | 34367 Nişantaşı / İstanbul
Tel: +90 212 219 74 74 | Fax: +90 212 219 15 82