



— INTRODUCING —  
BRONSON 50  
BRONSON 70

Bronson 50



BRONSON 50



**STEELER BRONSON 50**

Unmistakably Steeler,  
Stunningly different.

During the first sea trials in St. Tropez the weather conditions were force 5-6 wind and a choppy sea, ideal for the Bronson 50 to be tested. Remarkable was the complete absence of spray water, the low noise level enabling conversations at full speed, smooth wave handling and excellent view from the steering area at all speeds.





# STUNNINGLY DIFFERENT

The Steeler Bronson 50 is the first powerboat on the market to offer you a fabulous open connection between the suave cruiser-style interior areas and luxurious launch-like outdoor spaces.

Blending the sleek lines of a powerboat with the luxuries of a motoryacht, this remarkable split-level layout is set to change everything.



# SHE

is designed to please  
is the full package  
is the epitome of beauty and class  
elegantly outperforms her rivals  
is the toughest guy around

She is the Bronson 50



# She is the full package

The Bronson 50 is standard equipped with all you need for the ultimate yachting experience

## STANDARD SPECIFICATIONS BRONSON 50

### Dimensions & Certification

Length overall	15,24 M/ 50 Ft
Beam	4,45 M/ 14.6 Ft
Draft	1,20 M/ 3.9 Ft
Displacement (50% loaded)	16 ton/ 32000 Lbs
Construction	Aluminium EN AW 5083
Classification	CE classification – B

### Propulsion & performance

Propulsion	Twin Volvo Penta D8-IPS800
Speed	37 knots (cruising speed 32 knots)
Diesel tanks	2200 L, 2 x fuel filter/water separator, water in fuel alarm.
Range @ cruising speed	440 Nm

### Comfort & usability

Generator	Northern Lights 10 KW
Climate Control	28.000 BTU reversible cooling/heating
Sun protection	Radar arch with fixed Bimini

Optional :	rotating T-top transforming the Bimini into a Hardtop (new from Steeler, patent pending)
------------	--



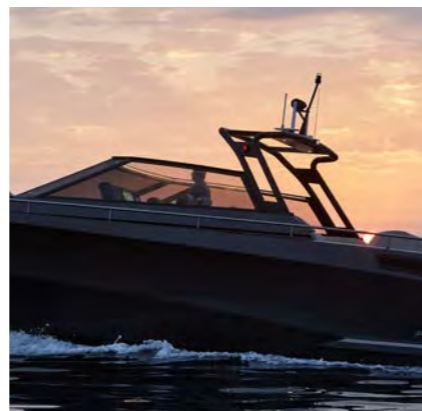
rotating T-top transforming Bimini into Hardtop and vice versa



cruising speed 32 knots



Twin Volvo Penta



Radar arch

Sliding roof

Deck surface

Upholstery

Guardrail

Drinking water

Automatic bilge pumps

Freshwater

Waste water

Entertainment

Television

### Cruising, mooring & anchoring

Anchor system

Bow thruster

Navigation Equipment

Trim system

Hydraulic bathing platform

Tender

Hot water System

Sliding glass roof over Galley & Dining area, electrically operated Flexiteek 2.0 on cockpit floor and all decks

Dry foam (water resistant , avoiding wet cushions)

Stainless steel 316, around decks and cockpit

Seagull waterfilters on tab (for 100% safe potable drinking water from the water tank)

Three 24V automatic bilge pumps (65L/min)

270 litres/ 72 Gallon

200 litre/ 53 Gallon

High end audio

10 x GM loudspeakers,

4 x Mosconi power amps,

2 x Flatscreen Mirror TV

(in dining area and master)

Hydraulic push forward system with 24VDC electric windlass. Stainless steel anchor, 60 metre chain.

Side Power 120 KGF proportional Volvo Penta Glass Cockpit (2 x 16 inch)

VHF Garmin 315I

Garmin Speed / depth transducer

Garmin GPS antenna

Humphree trim system

(for pitch control)

Humphrees Interceptor active ++

(for roll control)

HB Technics, capable to lift Seadoo Trix waterscooter

Zodiac 230, in tender storage under sunbed

Webasto, Isotemp boiler, 50 Liters/ 13.2 Gallon.



Sliding glass roof over Galley & Dining



Hydraulic bathing platform



High end audio

STANDARD SPECIFICATIONS BRONSON 50

**Electrical installation**

Full Digital Switching

Galvanic isolation transformer  
 Inverter/Battery Charger  
 DC System  
 Batteries

Additional Battery Charger

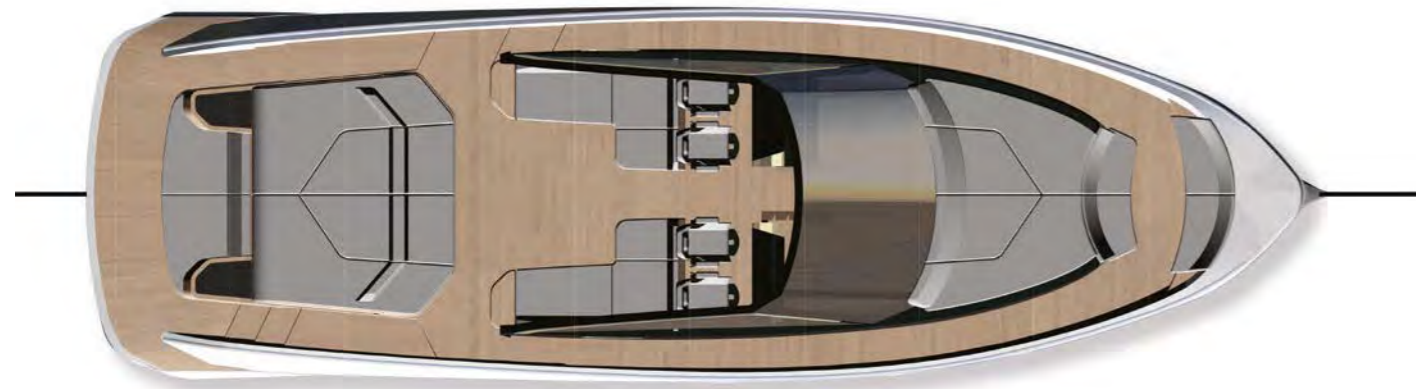
Empirbus/CANbus, with 4 Empirbus modules (64 i/o channel).  
 This Steeler Digital Monitoring system enables remote service, support and updates.  
 3500W  
 Mastervolt Mass Combi Pro 24/3500 24V  
 2x MLV Lithium Ion 24V 5500 200A ,  
 4x 160 Ah AGM starting circuit.  
 Mastervolt, Chargemaster 24/30  
 - 3 outputs  
 proportionally controlled battery charger



Volvo Penta Glass Cockpit



Split level lay out, connecting all area's



**Interior & carpentry**

Lay out finishing  
 Lay out interior

Domestic Appliances

Toilets

Insulation hull and superstructure

Insulation engine room

Finish In high gloss  
 Owners cabin with separate WC and shower cabin  
 Galley & dining area midships, with glass roof  
 Skipper/guest cabin, with toilet (optional instead of storage room)  
 2x 160 litre Fridge with freeze unit,  
 1 x Drawer Fridge  
 Ice Maker, 15 liters  
 Combi oven/microwave,  
 Corean Work surfaces,  
 One handle mixer tap,  
 2-ring Induction stove  
 Planus, 24V, Multi, soft closing.

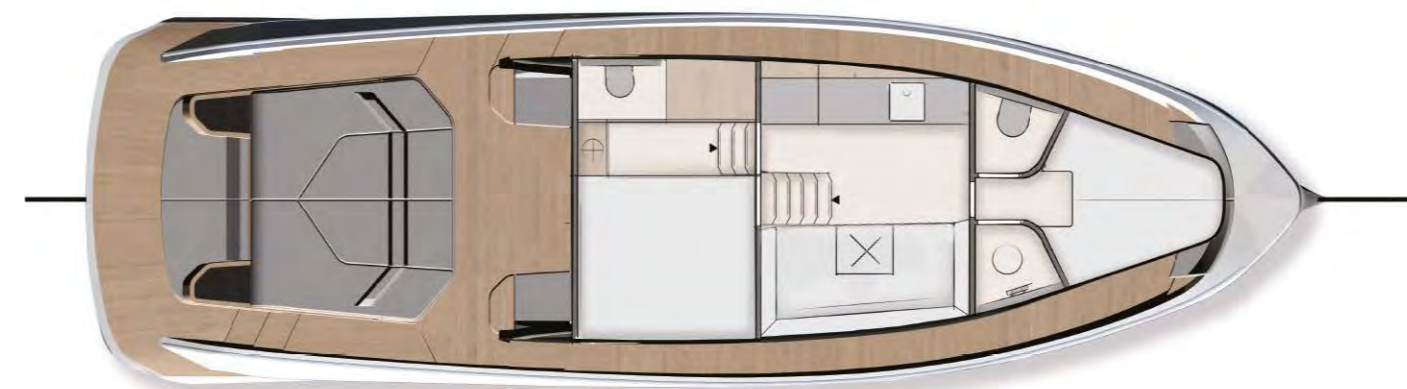
Full Foam Core insulation for thermal insulation and preventing condensation  
 Mascoat DB soundisolation for silent cruising at high speed



Finish In high gloss metallic,



silent cruising at high speed







She is designed to please

She is the epitomy of beauty and class







Optimal enjoyment of every different space from bow to stern is assured thanks to the integrated cockpit and cabin area, which is in effect designed as one open space where all the people onboard can easily stay in touch with each other. Let's walk through the Bronson 50 design together, starting at the stern.

Furthest aft is a wind-protected bench complete with side tables (with storage underneath, making best use of every inch in true Steeler style). This is one of those places on a boat where owners and guests often wish they could sit but typically cannot. Moving forward, expansive sun beds have a back rest that slides aft or forward so you can choose which way to lie and in which direction. Under the lounge bed is another large storage area, with room for a dinghy if you wish.

Approaching amidships are comfy lounge benches to port and starboard, each with a table. At least eight people can enjoy lunch or cocktails here in outstanding comfort and sheltered from the wind.




She elegantly outperforms her rivals

The kings of the cockpit can sit on the four professional helm seats looking forward as one or more operates the widescreen helm and co-driver console.

If watching the world go by makes you peckish, you can step down into the kitchenette to rustle up drinks and food while still maintaining direct contact with the people who are at the helm or chilling on the bow rider seating. The split-level lounge is another nice place to relax on the sofa while still feeling very much in the thick of the action. This whole area can be closed off at the push of a button with a glass hatch roof and glass sides should the weather becomes inclement.

As if this wasn't enough, you also have a superb, spacious interior at your leisure, including a full-beam cabin below the flybridge and a standing-room-height master suite forward with a shower room. The lounge settee also converts into a bed, so you can actually go on trips with up to six guests staying onboard.

A large, dark-colored motorboat is shown from a high-angle, rear-quarter perspective, moving across a vast expanse of blue water. The boat is leaving a wide, white wake that stretches far behind it. The sun is low on the horizon, creating a bright, shimmering path of light across the water's surface. In the distance, a range of low mountains or hills is visible under a clear sky. A few other boats, including a sailboat, are scattered on the horizon. The overall scene conveys a sense of freedom and luxury on the water.

She is the toughest guy around

All in all, this is a phenomenal amount of space below for a 50-footer – and just as much room outside to enjoy the al fresco life.

She is the Bronson 50



Introducing the  
**BRONSON 70**

BRONSON 70

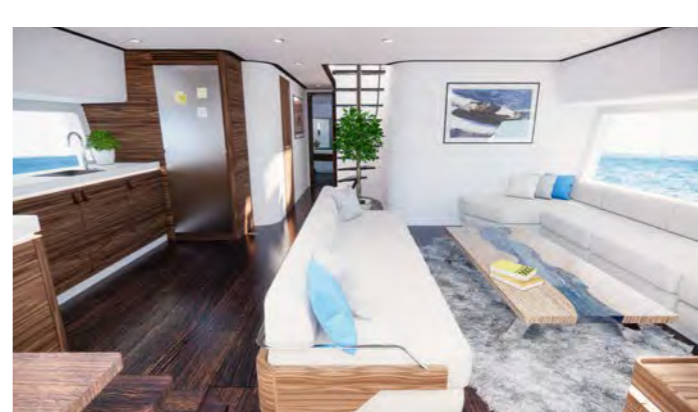


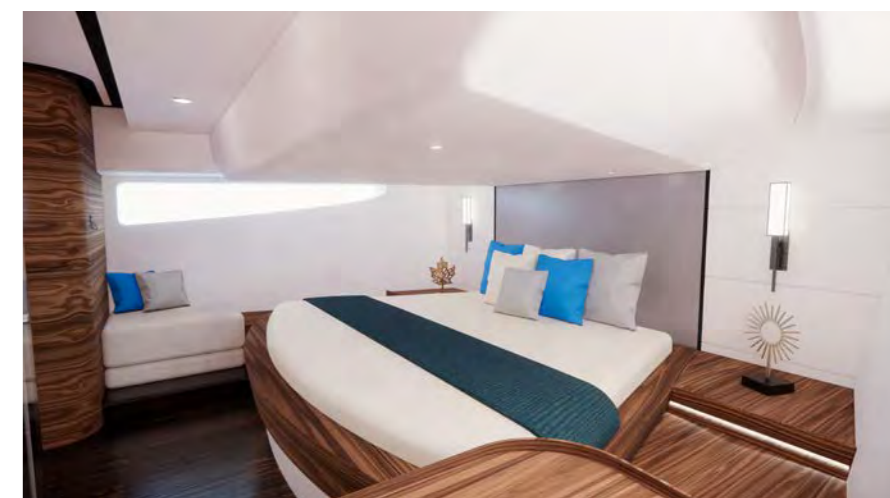
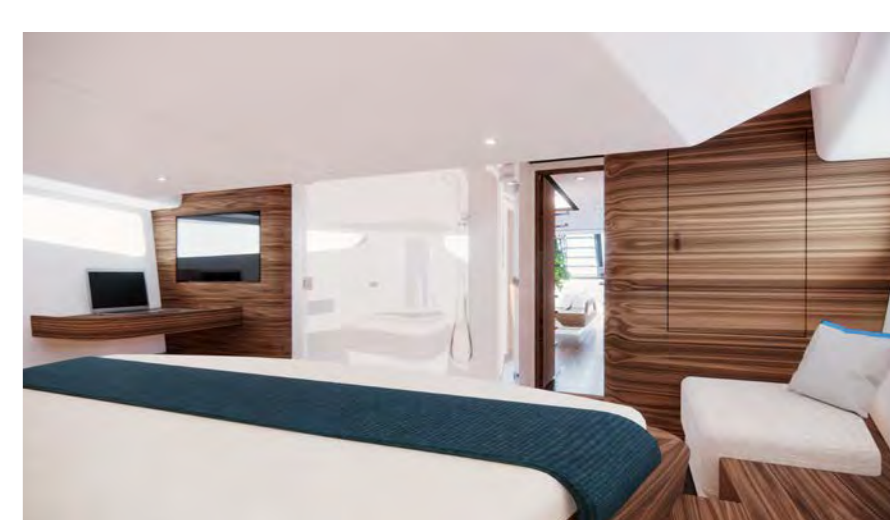
STEELE BRONSON 70













## The Bronson 70 is standard equipped with all you need for the ultimate yachting experience

### STANDARD SPECIFICATIONS BRONSON 70

---

#### Dimensions & Certification

Length overall	21,40 M/ 70 Ft
Beam	5,80 M/ 19 Ft
Draft	1,55 M/ 5.1 Ft
Construction	Aluminium EN AW 5083
Classification	CE classification – B

---

#### Propulsion & performance

Propulsion	Triple Volvo Penta D13-IPS1050, optional triple Volvo Penta D13-IPS1350
Speed	36 knots (cruising speed 30 knots)
Diesel tanks	6000 L

---

#### Comfort & usability

Generator	Northern Lights 20 KW
Climate Control	90.000 BTU reversible cooling/heating
Sun protection	Rotating T-top transforming the Bimini into a Hardtop (new from Steeler, patent pending)
Deck surface	Flexiteek 2.0 on cockpit floor and all decks
Upholstery	Dry foam (water resistant , avoiding wet cushions)
Guardrail	Stainless steel 316, around decks and cockpit
Automatic bilge pumps	Five 24V automatic bilge pumps (65L/min)

Freshwater	1500 litres / 396 Gallon
Waste water	750 litres / 198 Gallon
Entertainment	High end audio 16 x GM loudspeakers, including 3 subwoofers 8 x Mosconi power amps, 2 x Flatscreen Mirror TV (in dining area and master)
Television	

---

#### Cruising, mooring & anchoring

Anchor system	Hydraulic push forward system with 24VDC electric windlass. Stainless steel anchor, 60 metre chain.
Bow thruster	Side Power proportional
Navigation Equipment	Volvo Penta Glass Cockpit (2 x 24 inch) VHF Garmin 315I Garmin Speed / depth transducer Garmin GPS antenna
Trim system	Volvo trim system (active ++)
Hot water System	Webasto, Isotemp boiler, 50 Liters/ 13.2 Gallon.

---

#### Electrical installation

Full Digital Switching	Empirbus/CANbus, with 6 Empirbus modules (96 i/o channel).
Galvanic isolation transformer	7000W
Inverter/Battery Charger	3x Mastervolt Mass Combi Pro 24/3500
DC System	24V
Batteries	4x MLV Lithium Ion 24V 5500 200A

---

**Interior & carpentry**

Lay out finishing

Lay out interior

Wet bar

Domestic Appliances

Toilets

Insulation hull and superstructure

Insulation engine room

Finish In high gloss

Owners cabin with separate WC and shower cabin

Galley & lounge area midships

Guest cabin, with private bathroom and day head  
(optional crew cabin in bow)

grill, sink, fridge 92 litre toploader

1 x 160 litre Fridge

1 x Drawer Fridge with freeze unit

Built-in fridge box 172 litre in galley

Ice Maker, 15 liters

Combi oven/microwave,

Corian Work surfaces,

One handle mixer tap,

2-ring Induction stove

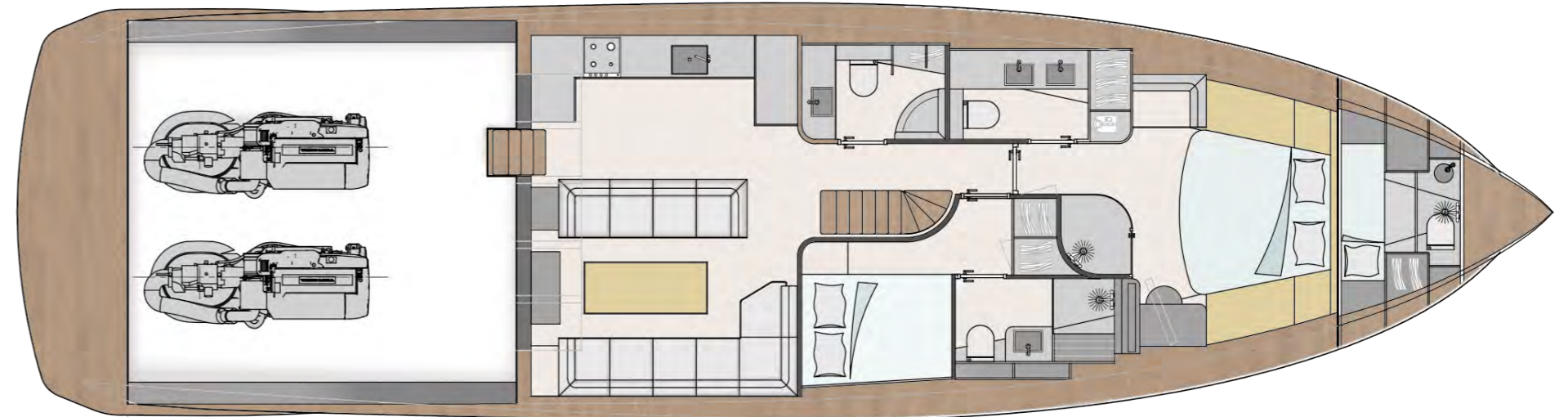
2 x Planus, 24V, Multi, soft closing.

Full Foam Core insulation for thermal insulation and preventing  
condensation

Mascoat DB soundisolation for silent cruising at high speed

---

LAY-OUT BRONSON 70







*Steeler*  
— DUTCH CUSTOM CLASS —

STEELERYACHTS.COM