



amer
— 950 —

























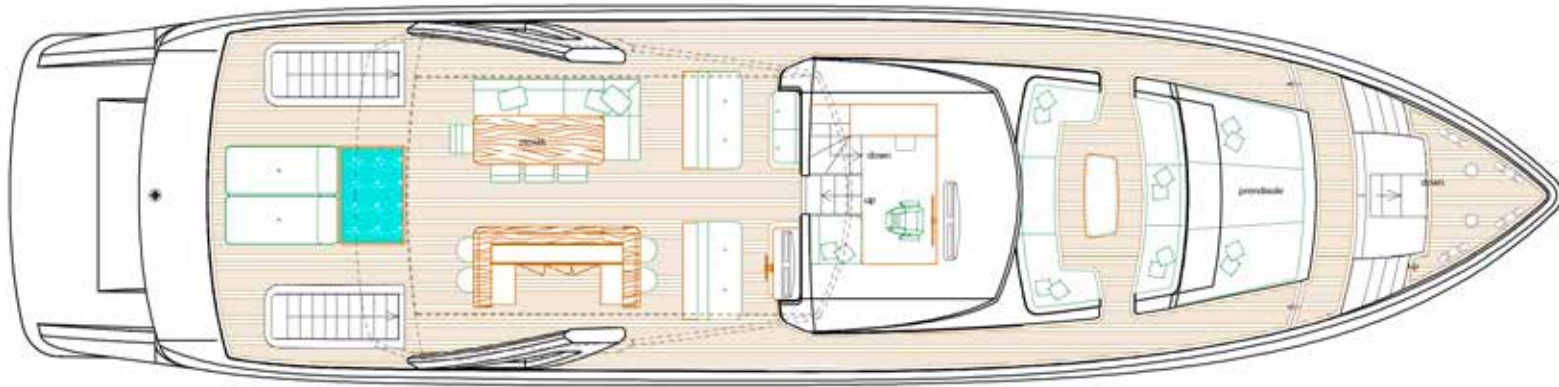




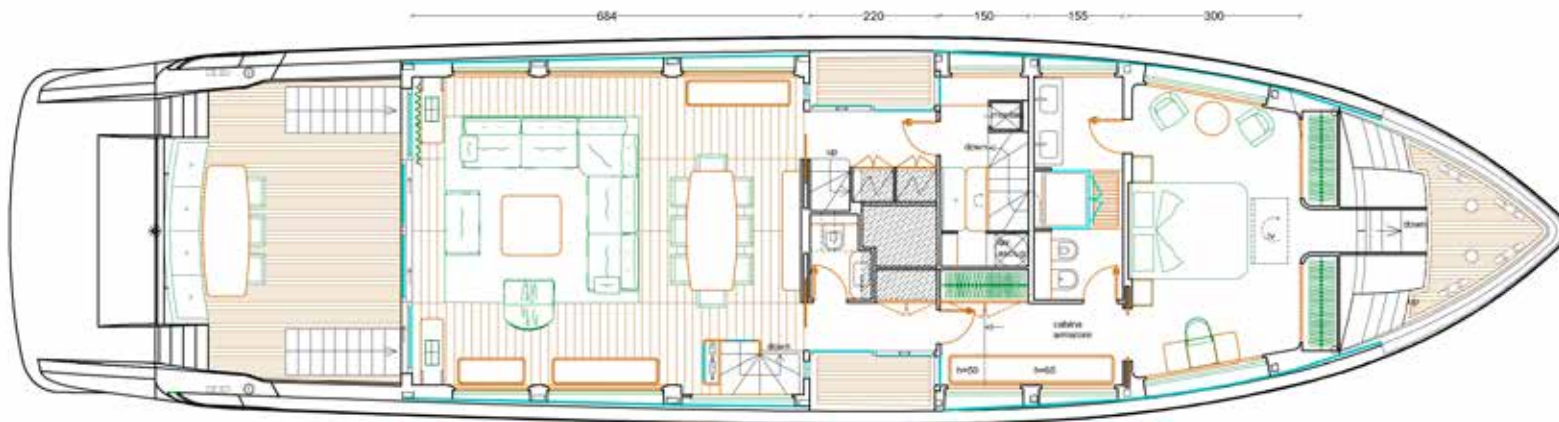




amer - 950 -



fly deck



main deck



lower deck

amer -950-

<u>LOA</u>	27,45 m	<u>LOA</u>
<u>Lunghezza scafo</u>	23,96 m	<u>LWL</u>
<u>Larghezza massima</u>	6,84 m	<u>Max Beam - BH</u>
<u>Motorizzazione</u> <u>Pescaggio a pieno carico</u>	2 x Volvo Penta IPS 1350 1,77 m	<u>Propulsion</u> <u>Maximum draft fully loaded</u>
<u>Motorizzazione</u> <u>Pescaggio a pieno carico</u>	3 x Volvo Penta IPS 1350 1,85 m	<u>Propulsion</u> <u>Maximum draft fully loaded</u>
<u>Materiale</u>	Composite	<u>Material</u>
<u>Combustibile</u>	5900 l	<u>Fuel tank</u>
<u>Acqua dolce</u>	1500 l	<u>Water tank</u>
<u>Velocità di crociera</u> <u>Velocità massima</u>	24 +/- 1 Kn 26 +/- 1 Kn	<u>Cruising speed</u> <u>Top speed</u>
<u>Dislocamento a pieno carico</u>	75 t	<u>Full displacement - MLDC</u>
<u>Classe</u>	Rina CE	<u>Classe - CE</u>
<u>Cantiere</u> <u>Naval Architect</u>	Permare srl	<u>Builder</u> <u>Naval Architect</u>
<u>Architetto interni / esterni</u>	GANTO studio	<u>Interior / exterior designer</u>

www.ameryachts.com

amer

— YACHTS —

Via Del Castillo 17
Portosole
Sanremo (IM) - Italy
Tel.: +39.0184.504050

