

amer -120-

an authentic italian yacht
www.ameryachts.it

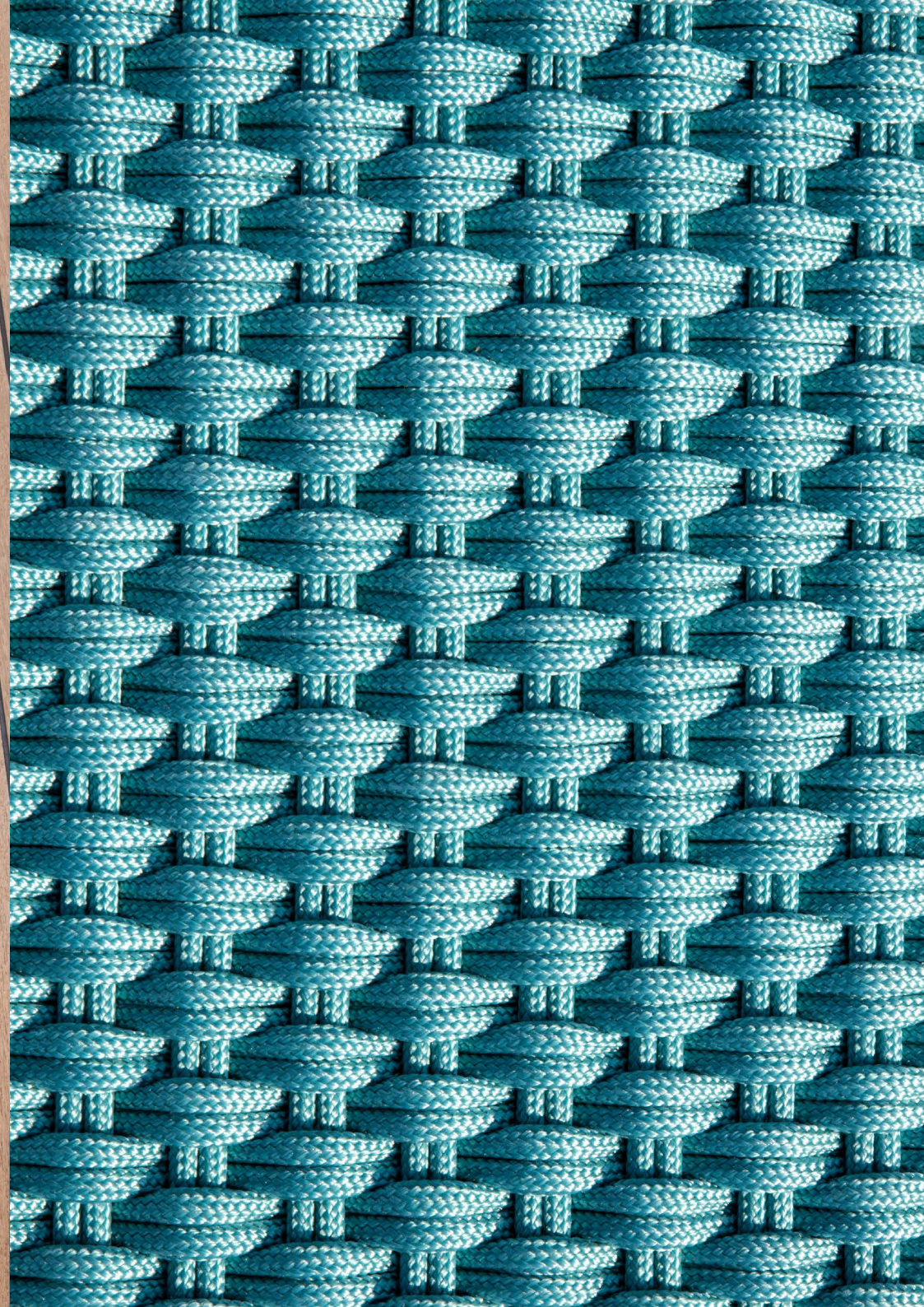


amer 120

amer 120
world premiers































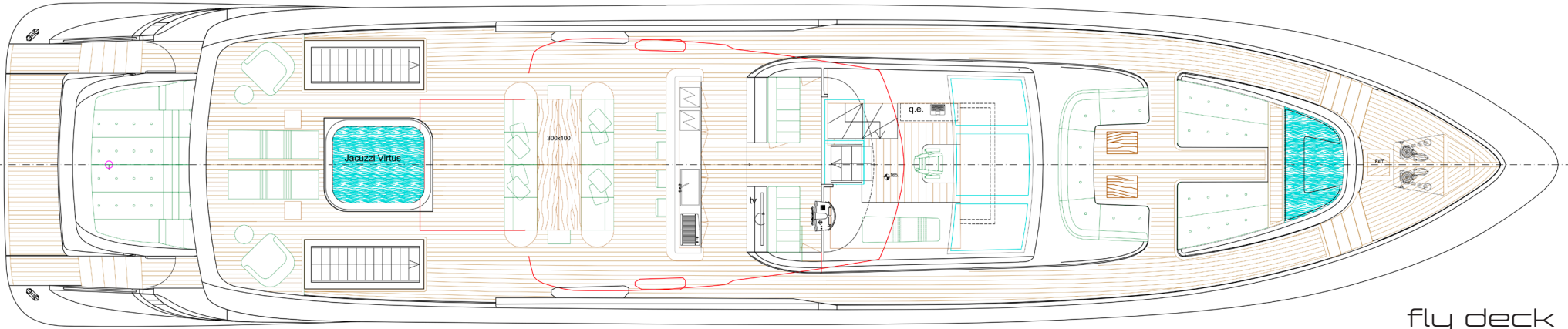




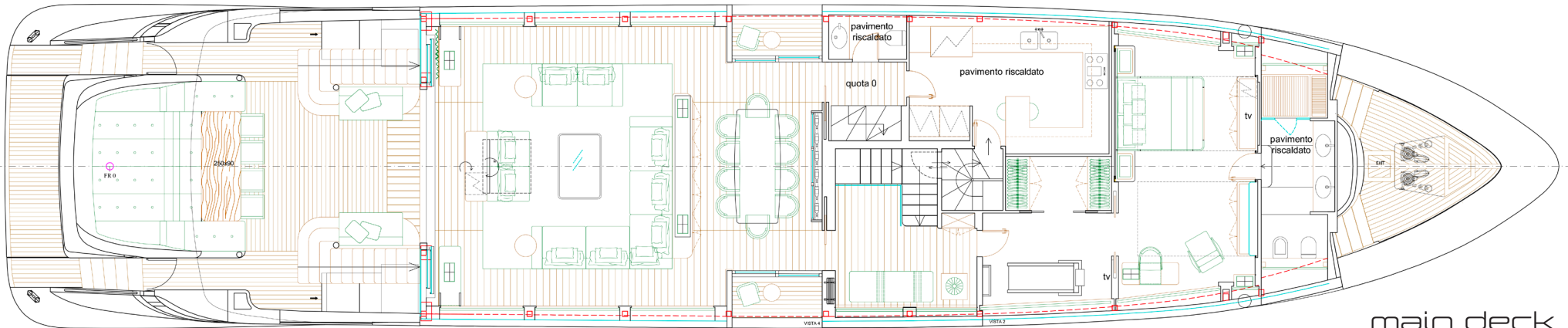




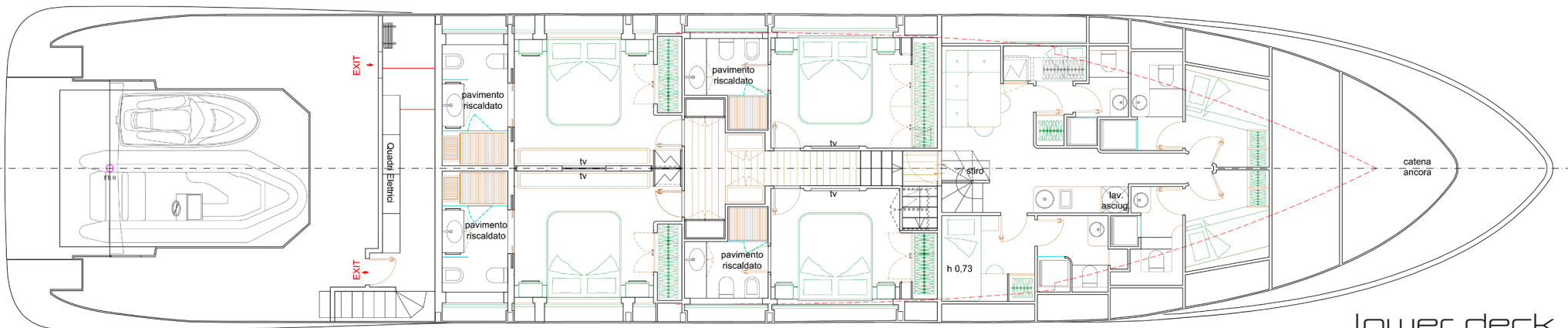
amer 120



fly deck



main deck



lower deck

amer 120

<u>LOA</u>	35,50 m	<u>LOA</u>
<u>Larghezza</u>	7,40 m	<u>Wide</u>
<u>Pescaggio</u>	2,11 m	<u>Draft</u>
<u>Materiale</u>	VTR -GRP	<u>Material</u>
<u>Motorizzazione</u>	4 x VOLVO PENTA 1350 IPS 4 x 1000 hp	<u>Propulsion</u>
<u>Combustibile</u> <u>Acqua dolce</u>	12.000 l 3.000 l	<u>Fuel tank</u> <u>Water tank</u>
<u>Velocità di crociera</u> <u>Velocità massima</u>	23±1 27±1	<u>Cruising speed</u> <u>Top speed</u>
<u>Dislocamento a pieno carico</u>	150 t	<u>Full displacement - MLDC</u>
<u>Dislocamento a mezzo carico</u>	142 t	<u>MLC</u>
<u>Classe</u>	Rina CE	<u>Class - CE</u>
<u>Cantiere</u>	Permare srl	<u>Builder</u>
<u>Designers</u>	EXTERIOR: Ing. Andrea Ramasco INTERIOR: Arch. Sfano Tini	<u>Designers</u>
<u>Ingeniere Navale</u>	Massimo Verme	<u>Naval Architect</u>

www.ameryachts.com

amer

— YACHTS —

Via Del Castillo 17
Portosole
Sanremo (IM) - Italy
Tel.: +39.0184.504050

